

battery type: Alkaline Manganese (Mercury free)
battery size: IEC: LR03; JIS: AM-4; ANSI: 24A; MN2400; AAA, Micro
chemical system: Zn / KOH-H₂O / MnO₂

nominal voltage: 1.5 V
open circuit voltage: 1.57...1.65 V new battery
 1.55...1.65 V after 1 year storage at 20°C

capacity rated: 1250 mAh all measurements at 20°C ambient
 discharge at 10mA load; 24hours/day
 End Voltage (EV): 0.8V
 1200 mAh discharge at 75ohms load; 4hours/day
 End Voltage (EV): 0.9V

minimum: 17.5 h at 20ohms constant resistance discharge
 (for IQC measurement) 24h/d; End Voltage (EV): 0.9V
 32 min at 600mA constant current discharge
 24h/d; End Voltage (EV): 0.9V

typical service output

Load	20Ω	600mA	600mA	5.1Ω	5.1Ω	100mA	24Ω	75Ω	50 mA,	
Test mode	24h/d	24h/d	10s/m, 1h/d	1h/d	4m/h,8h/d	1h/d	15s/m 8h/d	4h/d	1h/12h 24h/d	
End voltage	0.9V	0.9V	0.9V	0.8V	0.9V	0.9V	1.0v	0.9V	0.9 V	
Unit	h	m	pulse	m	m	h	h	h	h	
Applications	Reference	Reference	Photo flash	Toy	Portable lighting	Digital audio	Remote control	Radio/Clock	Digital Audio	
Initial	MAD	17.5	32	300	235	220	8.8	19.5	71	20.5
	Normal	18.5	40	380	260	240	9.8	20.7	75	22
Stored 1 year	MAD	16.4	27	270	220	200	8.6	19.0	68	18.5
	Normal	17.5	32	320	240	225	9.3	20.0	72	20

m: minute h: hour d: day

internal resistance: ≤ 0.3 Ω at 1kHz, sine wave measurement
 (new battery) according to IEC 896-2

shelf life: 5 years under proper storage conditions

leakage resistance

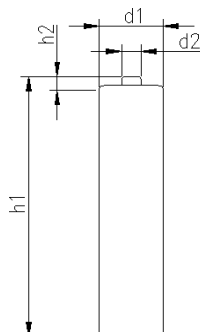
over discharge: no leakage 20ohms continuous discharge for 48h; ta: 20°C; RH: 60±15%
 high temperature: no leakage store 20days at ta: 60°C; RH:90±5%


ambient temperature range: - 10...50 °C

recommended storage conditions: 5...25 °C ambient temperature
 45...75 % rel. humidity

mechanical specifications

cell dimensions
 diameter d1: 10.4 - 0.5 mm
 diameter d2: 3.6 - 0.4 mm
 height h1: 44.4 - 0.6 mm
 height h2: 1.2 - 0.35 mm
 weight: 11.5 ± 1.5 g



 SINDS 2005	Specifications for model:	High Quality Alkaline Battery AAA - size
	data sheet no. / part no.	
	s.n.	701381
	author / date	TG / 19.04.2021